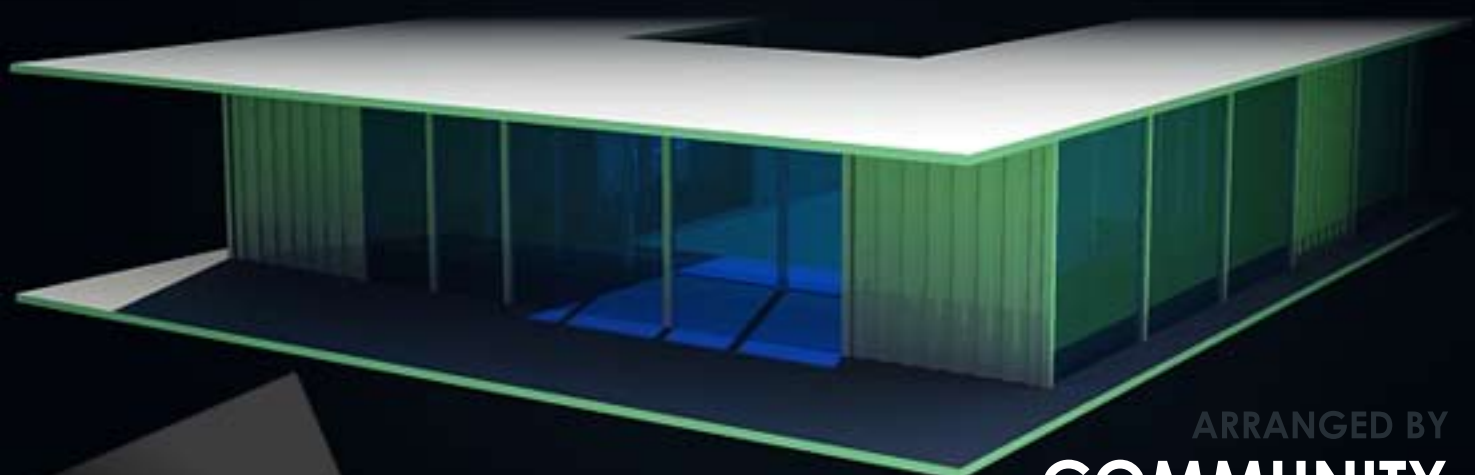


ASHO 2009

ALTERNATIVE **SUSTAINABLE** HOUSING OPTIONS

Design-Build Summer Studio aimed at providing affordable green homes for needy Atlanta residents.



ARRANGED BY

**COMMUNITY
DESIGN
CENTER OF
ATLANTA**



table of contents
ABOUT CDCA 2
PROJECT DETAILS 3
DESIGN EXAMPLES 7
ADDITIONAL INFO 15

Inspiring Future Traditions in Community Development and Sustainable Living

CDCA MISSION STATEMENT

The Community Design Center of Atlanta, Inc. collaboratively provides responsive approaches to the needs of low income neighborhoods through the application of planning, research and design skills. This technical assistance promotes social equity for low income and minority groups through the development of programs and projects that local communities desire and are able to control the implementation thereof.

CDCA CURRENT INITIATIVES

NSA 2008-2009, A touring workshop created for CDCs through the state of Georgia to explore Neighborhood Stabilization Approaches.

Where It Matters 2008, A summer studio exploring cost effective green build for low income residents in strategic in-town locations **Where It Matters**

AFSC SERO Green Rehab 2008-2009, The CDCA is helping with the development and implementation of a green rehab for the American Friends Service Committee Southeastern Regional Offices.

Hope Floats Initiative 2009, CDCA is acting as the development team for HFI, a Nigerian based amphibious shelter design.

Architecture For Humanity 2009, The CDCA has developed the Atlanta chapter of a globally operational design activist non profit.

ALTERNATIVE **SUSTAINABLE** HOUSING OPTIONS

Design-Build Summer Studio aimed at providing affordable green homes for needy Atlanta residents by:

Engaging student leaders through hands on team work with LEED Accredited Professionals and panel discussions with City of Atlanta's senior level planning and building officials, USGBC and AIA trade and association representatives

Demonstrating quality design and development of affordable alternative sustainable housing options

Innovating building methods that implement the use of sustainable materials, in cost-effective and energy conservative ways

Providing housing for low-income residents that will support a sustainable and eco-friendly way of living

TIMELINE

Registration

Partner Deadline May 1, 2009

Student Deadline May 1, 2009

Design Phase [2 WEEKS]

June 4- June 20, 2009

Building Phase [7 WEEKS]

June 14- August 1, 2009

Jury Week and Public Reception

August 1- 8, 2009

BUDGET

Build Out Budget \$438,300

Building Permit Fees \$ 11,700

CDCA Admin \$2,600

Project Consultant \$14,000

Special Events + Marketing \$1,000

Architecture Student Stipends \$23,200

Insurance \$10,000

Engineering Students 1 team \$1,400

Landscaping students 1 team \$1,400

Total \$503,600*

*total estimate based on 4 homes





ASHO PROGRAM + TEAM STRUCTURE

Students will participate in a rigorous undertaking of the building process from start to finish. Their leadership will play an integral part in the site context evaluation, aesthetic design, permitting, material sourcing, estimating, and overseeing of the construction process.

Each of the participating Design Teams will consist of 4 Students, 1 Faculty Advisor, 1 LEED Accredited Architect, and 1 Licensed Professional Contractor

An Engineering Team of 2 Students, and Landscape Team of 4 Students will work collaboratively to ensure the categorical implementation of a truly sustainable design

ALL TEAMS WILL OPERATE UNDER THE SUPERVISION OF THE ASHO ADVISORY TEAM, consisting of a Licensed Architect, Licensed Structural Engineer, and Licensed Landscape Architect

AWARD + RECOGNITION

In addition to invaluable leadership and design/build experience, students will be given the opportunity to see their designs make a positive impact on the local community, while exemplifying viable solutions to the nation's housing crisis.

Teams with permissible designs will be awarded a sufficient amount of funding to manage the construction of their design. In addition, one winning design will be selected to serve as the pinnacle design of the ASHO Studio and be recognized as such in any and all publications and documentation by the CDCA and other professional groups.

Students will also receive a small per diem to cover meal and travel expenses during their participation.

HOW TO REGISTER

Participating students should have a strong understanding of basic design principals and must be able to contribute to the design process. Drafting, diagramming, model making, presenting, and understanding of building materials are some core skills that will make for a successful team member.

Students should contact their school's official academic representative for the project to find out how they can be involved.

REGISTRATION DEADLINE: MAY 1, 2009

ASHO LAND COMMITMENT

The CDCA has secured a 1 acre parcel land committed to the collaborative efforts of ASHO to provide housing for residents who need to have the options of intown living. The land, valued at approximately \$875,000, with access to public transit, the BeltLine project, and various local parks, will be developed into a microcommunity that can truly lend itself to a sustainable way of living.





ASHO INDUSTRY PROFESSIONALS

Roy Taylor - Licensed Architect, LEED AP
Principal, RT3 Architects

George Runkle - Professional Structural Engineer
Owner, Runkle Consulting, Inc.

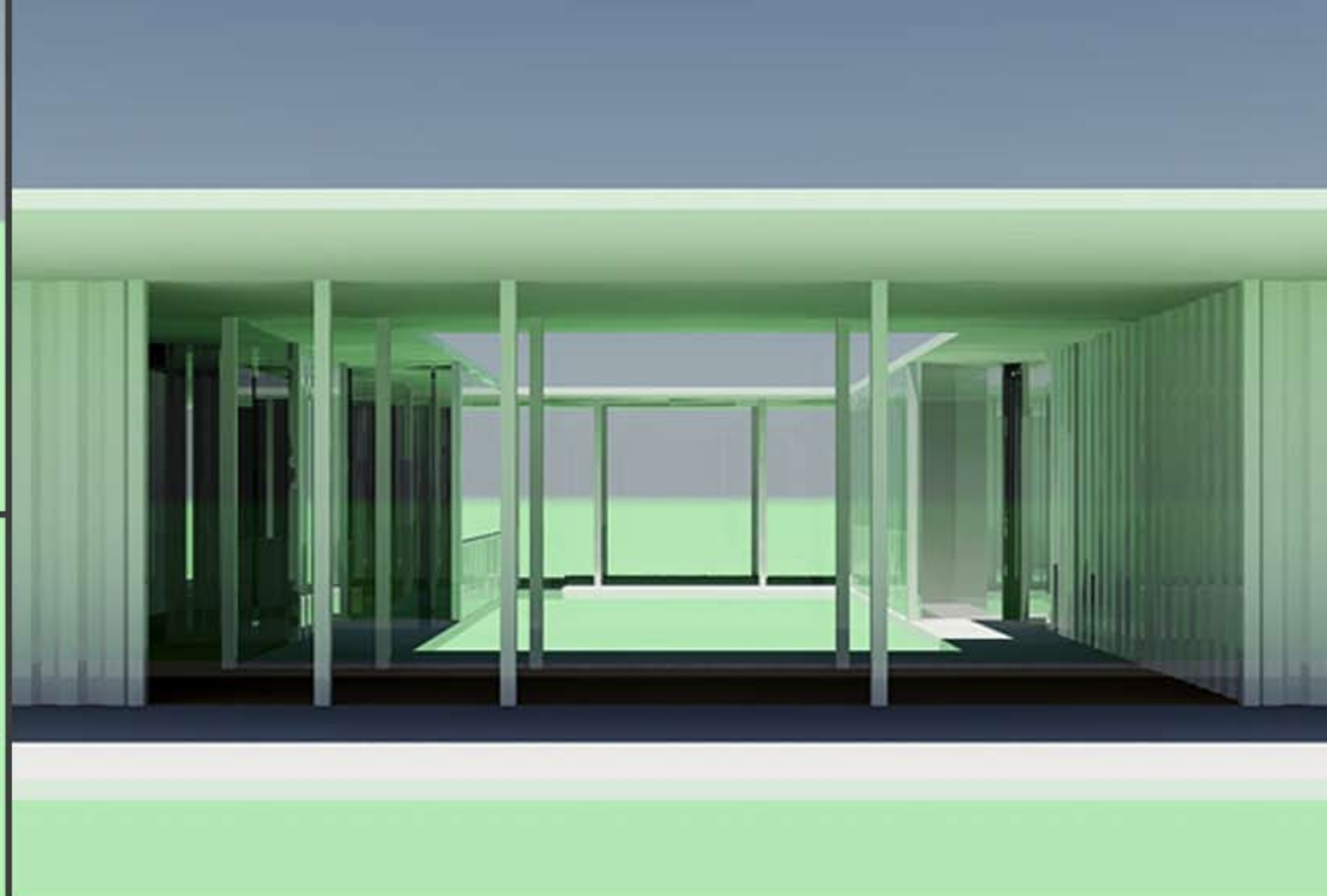
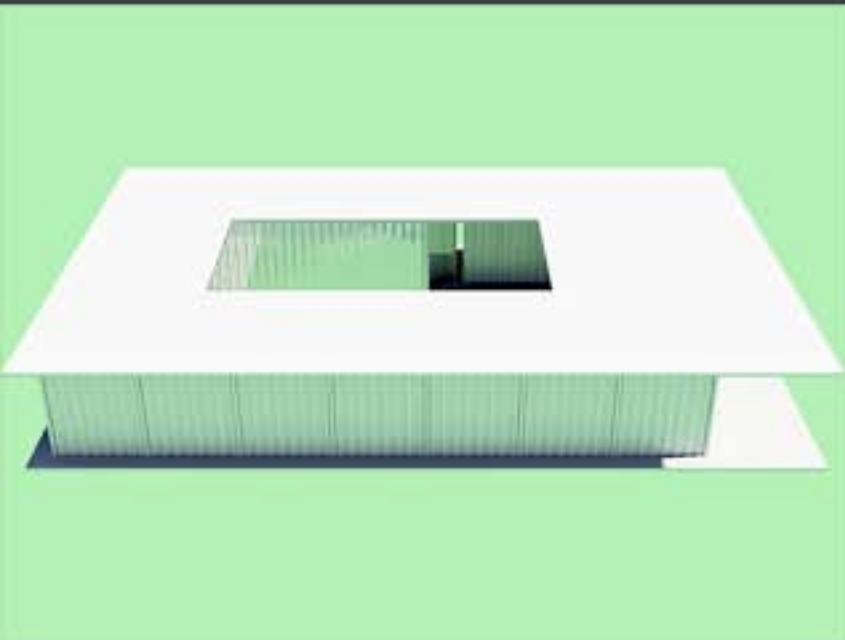
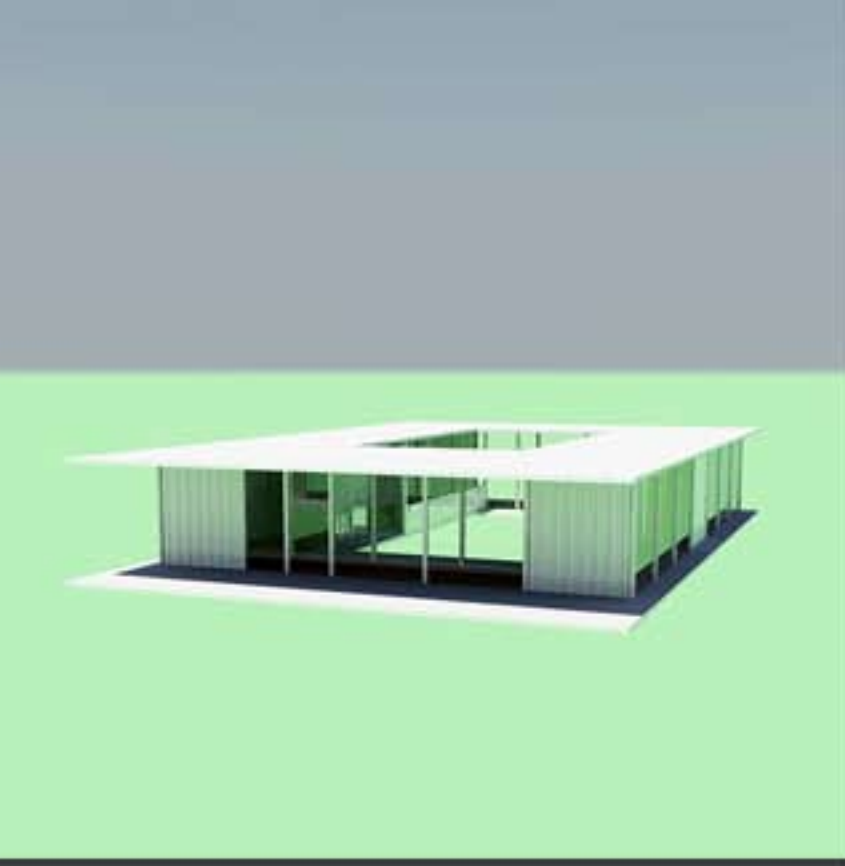
Rick Glassman - Licensed Architect, LEED AP
Senior Project Manager, Gerding Collaborative

Greg Mullin - Licensed Architect, LEED AP
Principal, Nodus LLC

David Dechant - Arborist, LEED AP
Consulting Arborist, Arbor Guard Tree Specialists

ASHO PROJECT VOLUNTEERS

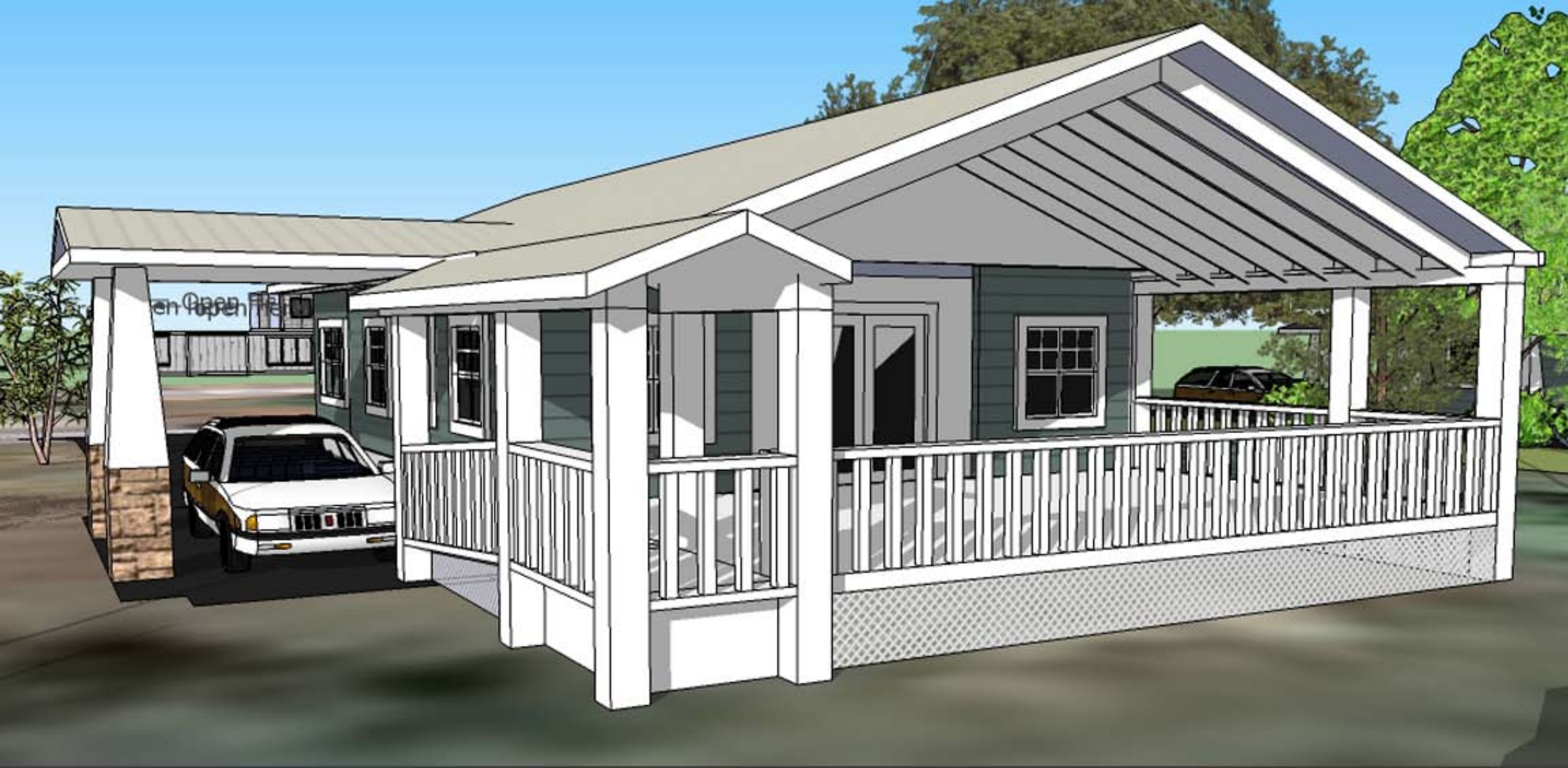
ASHO has garnered commitments in excess of \$80,000 in donated professional services. Our core group of ten industry professionals have assisted in the planning stages by providing cost estimates, proposed designs, site analysis and material research to name a few of these contributions. Volunteers will continue to be an integral part of this project as it continues through the building process. We intend to engage many more professional and student volunteers as well as members of the community along the way.



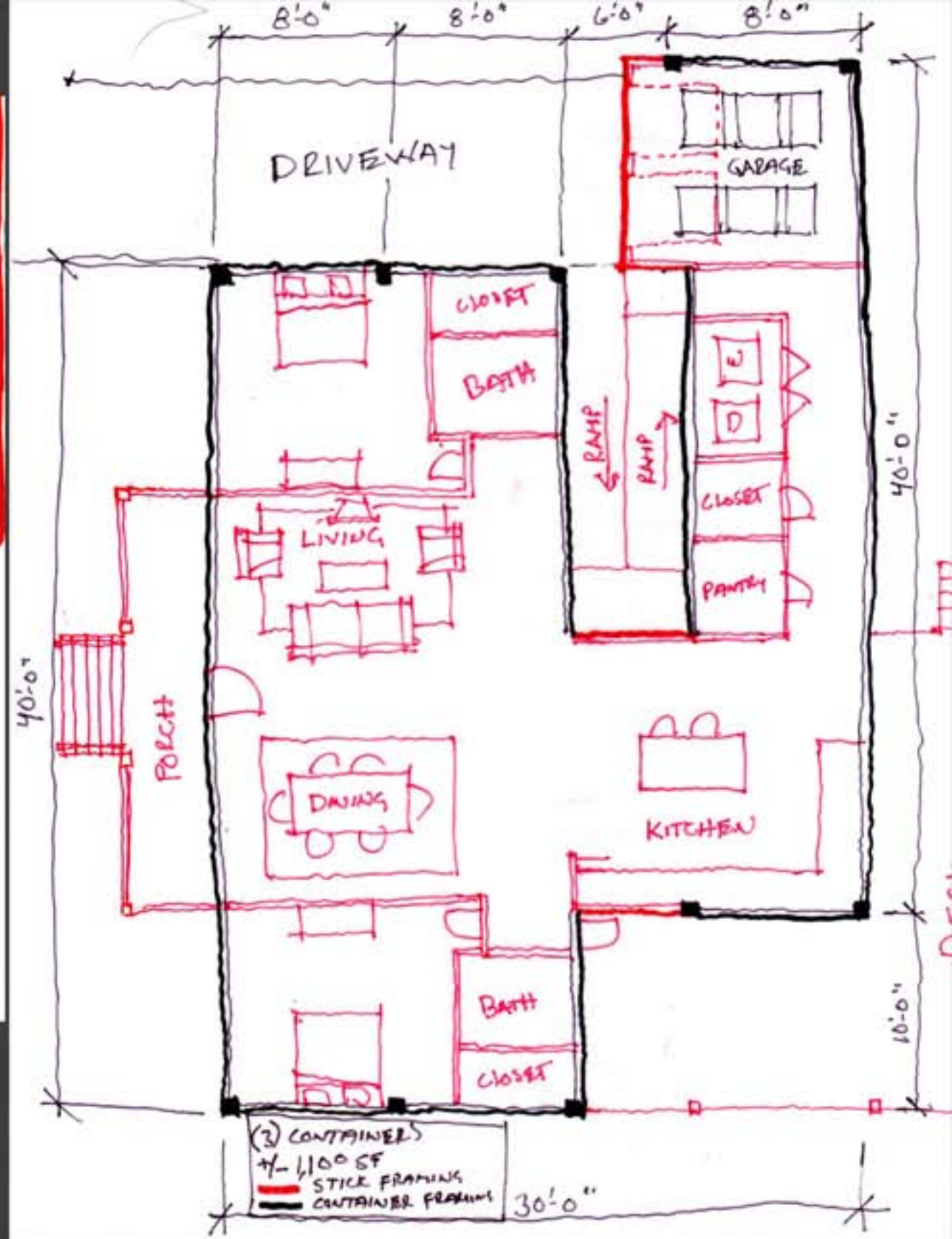
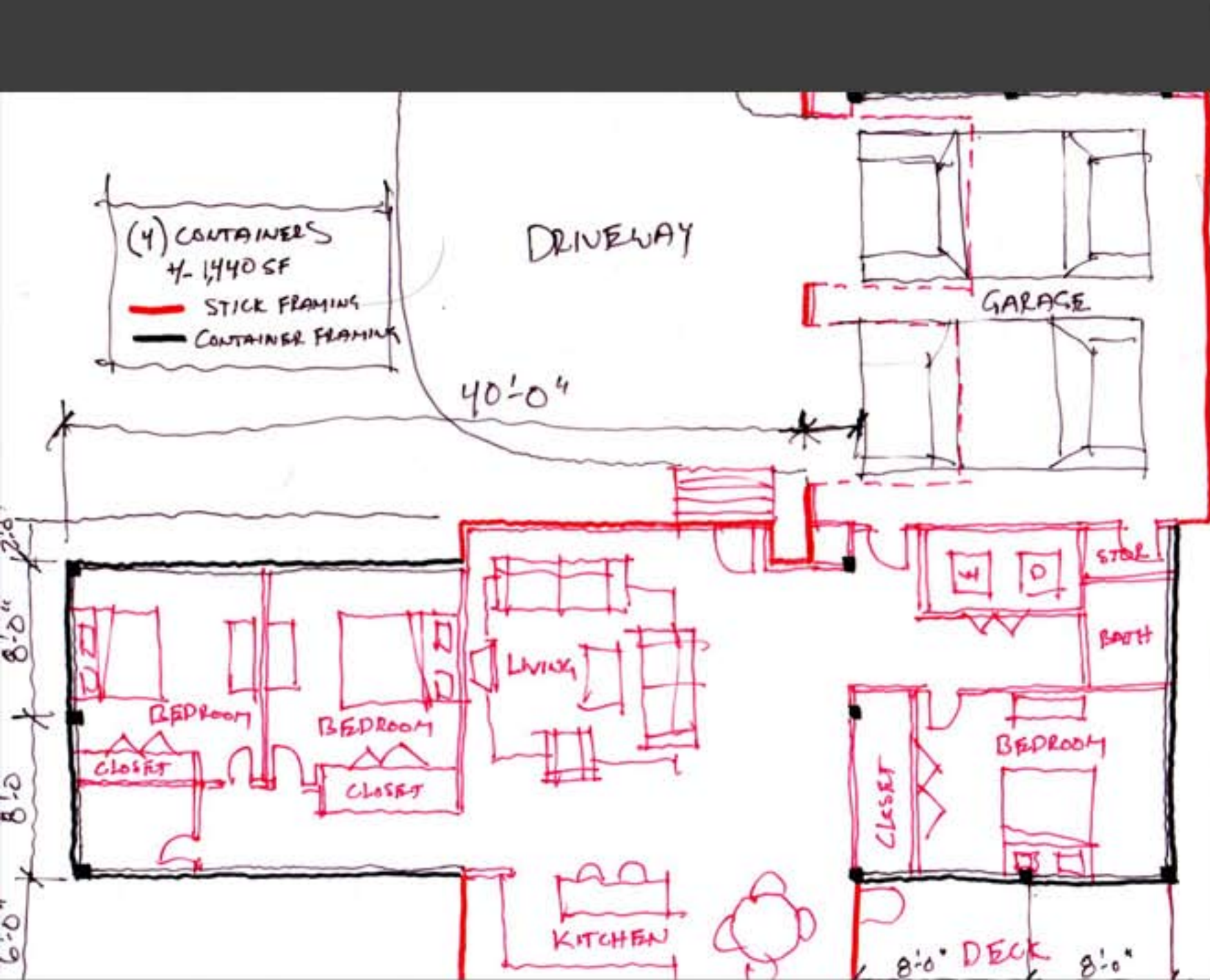
**VOLUNTEER DESIGN SUBMITAL
JAMES K. HOLDER II**



**VOLUNTEER DESIGN SUBMITAL
ANDREW TELKER**



VOLUNTEER DESIGN SUBMITAL
ANDREW TELKER



VOLUNTEER DESIGN SUBMITAL
JESSE FRASIER



CONTAINER HOME DESIGN PRECEDENT
ATLANTA, USA
FRANCIS KIRKPATRICK



**CONTAINER HOME DESIGN PRECEDENT
VENICE, CA USA
JENNIFER SIEGAL**



**CONTAINER HOME DESIGN PRECEDENT
AUSTRALIA
SEAN GODSELL**



**CONTAINER HOME DESIGN PRECEDENT
MISSION HILLS, CA USA
HOMER DELAWIE**

CDCA PAST INITIATIVES

Master Plan for Old Fourth Ward Redevelopment The CDCA assisted the City of Atlanta with the Redevelopment Master Plan for one of Atlanta's most vital historic districts, The Old Fourth Ward.

371 Irwin Street CDCA directed the rehabilitation of a historic structure for the Wheat Street Charitable Foundation to be used for low income multi family dwellings and handicapped accessible dwellings.

South Atlanta The CDCA provided site plans, designs and rehab plans for affordable housing in the neighborhood of South Atlanta.

South Atlanta Assessment CDCA partnered with Charis Housing and The Rockdale Foundation to complete a 7 year study of in-fill housing in the neighborhood of South Atlanta.

Reynoldstown Marta Impact CDCA helped the Reynoldstown residents explore the options and create an appropriate alternative to relocation of their neighborhood residents due to the placement of a Marta station cutting through their community.

ALTERNATIVE **SUSTAINABLE** HOUSING OPTIONS

Activist Design through planning, research, architecture and education.

Green Building Technology

Sustainable Planning

Micro-Community Development

Low Income Housing for In-Town Neighborhoods

Alternative and Re-use Building Options

Student Engagement

Civic Engagement

Design Innovation



ARRANGED BY

COMMUNITY

DESIGN

CENTER OF

ATLANTA

Inspiring Future Traditions in Community Development and Sustainable Living